



## **CATALOG**



**SHEET METAL ROOFING TOOLS | ROOFING TOOLS**



# No doubt about it: **FREUND** ...your tool!



*Our sales office and fully stocked warehouse are located in Indianapolis, IN.*

*For more than 160 years, we have been pursuing a family tradition, namely the design and the manufacturing of our state-of-the-art, handcrafted tools. These specialty tools, all **MADE IN GERMANY**, are designed for the roofing, sheet metal, plumbing and carpentry industries. We specialize in high quality, traditional and innovative hand tools for craftsmen working on roofing and sheet metal roofing.*

*Our longtime experience has certified our reputation as a leading manufacturer of the world's finest handmade tools used in the said industries.*

*Our objective is to allow craftsmen to save time and money, by using our high-quality, ergonomic tools. By word of mouth, more and more craftsmen have joined forces with FREUND ...your tool.*

*Our large and varied product line includes thousands of tools in every design and size. Slate hammers, rippers, anvils and roofer's hammers, tile cutting pliers, manual scissors for cement tiles and fibers, hammers for plumbers, trowels, saws, knives, measuring tools, hatchets, axes, sheet metal scissors, special tools for roof and front walls, the list goes on ...*

*We are ready to face any challenge regarding personal requirements that a customer might present us with and take pride in satisfying our customers with our innovative solutions.*



*Daniel Schreiber, Sales Director and Hans-Dieter Sanker, CEO*

**Sheet Metal Roofing Tools**



**10**     **Edge Roller**



**13**     **Clinching Pliers**



**16**     **Seaming Tong**



**17**     **Folding Tools**



**22**     **Tin Snips**



**26**     **Pliers**



**27**     **Scrapers and Folding Pliers**



**28**     **Sheet Metal Hammers**



**33**     **Soldering Irons and Accessories**



**42**     **Pipe Expander**

**Roofing Tools**



**46**     **Slate Hammers**



**46**     **Anvils**



**47**     **Slate Cutters and Accessories**



**48**     **Slate Rippers**



**50**     **Roofer's Hammers**

**51**     **Index**



Marcus Schnabel, Sales Director, USA

# APPLICATION-VIDEOS

The screenshot shows the FREUND website interface. At the top, there is a navigation bar with links for Home, Kontakt, Impressum, AGB, and Sitemap, along with a language selector set to 'Deutsch'. Below this is a secondary navigation bar with links for FREUND & CIE, Werkzeuge/Anwendung, News/Termine, Freizeiten, Händler/Außendienst, and Sortiment/Webshop. The main content area features a large banner with the word 'Aktuell' and an image of a router. Below the banner, there is a section titled 'Videos' containing five video thumbnails, each with a play button icon and a caption below it:

- [FREUND Premium-Kanter 91600000](#)
- [FREUND Standard-Kanter, doppelt 91620000](#)
- [FREUND Teller-Kanter 91611000](#)
- [FREUND Teller-Kanter, doppelt 91610000](#)
- [FREUND Standard-Kanter 91620000 Radius](#)



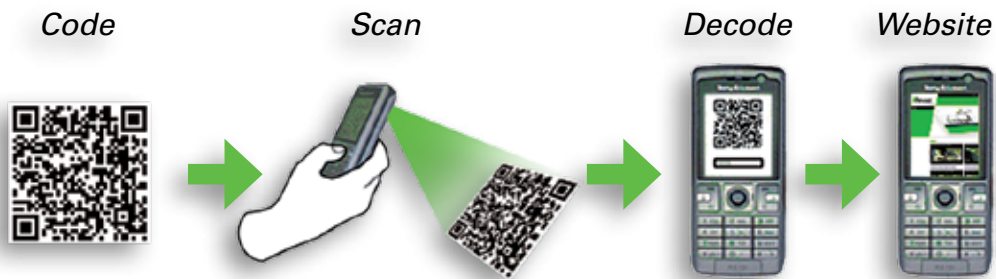
## QR STANDS FOR: QUICK RESPONSE

Save time with the QR code. Instead of typing in internet addresses, just scan the QR Code. All you need is a cell phone that's compatible with Java or a smart phone with a camera. The phone's program will analyze and then decode the information.

# QR-CODES



*And this is how it works...  
After scanning the QR code you will be automatically forwarded to  
the selected application video.*



## **QR-CODE READER**

*To be able to scan a QR-Code using a Smart-Phone you will need a so-called Reader Software (QR-App). There are various suppliers for different phone models. Corresponding Apps can be downloaded for free under Android or in the App-Store.*

*Items with this symbol*



*will refer to the corresponding QR-Code or relevant link.*



## ***SHEET METAL ROOFING TOOLS*** ***... FROM FREUND***

 **SHEET METAL ROOFER**  
**MAKE YOUR TOOL A FRIEND**

### **FROM "A" FOR ALUMINUM TO "Z" FOR ZINC**

*... FREUND has the right sheet metal tool for every operational purpose. Whether for aluminum, lead, copper or zinc, we offer appropriate tools or a selection of tools as a set for every assignment and purpose.*



## **SHEET METAL ROOFING**

### **Metal-working Hammers**

*Hand-made, precisely forged all the way through to the hand-finished polish of the hammer shaft. Together, with flat scrapers, angle flat scrapers, hatchet punches, tinman's anvils and other sheet metal tools, these are top quality products for a perfect application.*

### **Pliers + Seaming Tongs**

*The right pliers for every job. All our specialized tools are hand-made, hardened jaws and splits, honed and varnished. In addition, customized fabrications of specialized pliers are no problem for us.*

### **Metal Snips and Shears**

*All of our metal snips and shears are designed for a hard and professional job. It doesn't matter if it's a steel- or a HSS-snip, straight, right or left, with or without compound leverage, you choose the right snip for your job from our extensive assortment.*



<http://www.freund-tools.com/videos.html>  
or scan this QR-Code

**MAKE YOUR TOOL A FRIEND**



**Easy edging and bending of sheet metal**



**Mobile Edge Rolling Machines applicable with all prevalent materials**



**Affordable and versatile**

**Sheet thickness:**

zinc, aluminum	19 Gauge
copper	22 Gauge
steel	23 Gauge
stainless steel	26 Gauge







**1. FREUND DISK ROLLER**

Bends from 90° profiles to maximum 180°, bending height: min. 3/8" max. 1 5/8". No alignment or adjustment work necessary, expandable with a second Disk Roller and adapter to become a Double Disk Roller, bends sheets with the max. of 20 gauge strength, application of eaves and gutter flashings, alterations, etc.



91611000	2.05 lb	6 3/4" x 2 1/4"	1
----------	---------	-----------------	---



**2. FREUND DISK ROLLER DOUBLE**

Bends from 90° profiles to maximum 180°, bending height: min. 3/8" max. 1 5/8". No alignment or adjustment work necessary, bends sheets with the max. of 20 gauge strength, application of eaves and gutter flashings, alterations, etc.



91610000	6.04 lb	6 3/4" x 9 7/8"	1
----------	---------	-----------------	---



**3. FREUND RADIUS ROLLER 25**

For edging curved sheet metal and producing tight radii (inner and outer radii), the handle has been constructed for an optimal power transmission / compound leverage, measurements in both cm and inch, the bending height is infinitely adjustable, can bend from 1/4" - 1" sheet metal up to 22 gauge



Radius 25

91630000	1.92 lb	7 1/4" x 3 3/4"	1
----------	---------	-----------------	---



**4. FREUND RADIUS ROLLER 50**

For edging curved sheet metal and producing tight radii (inner and outer radii), the handle has been constructed for an optimal power transmission / compound leverage, measurements in both cm and inch, the bending height is infinitely adjustable, can bend from 1/4" - 2" sheet metal up to 22 gauge

Radius 50

91631000	2.03 lb	8 5/8" x 3 7/8"	1
----------	---------	-----------------	---



**5. FREUND STANDARD EDGE ROLLER**

Easy-to-read scale (mm + inch), loops to hang from work belt, expandable with a second Standard Edge Roller and adapter to become a dual bending machine, bending height: 1/4" - 7 1/2", suitable for small radii



91602000	3.07 lb	11 3/4" x 4 3/8"	1
----------	---------	------------------	---



**6. FREUND STANDARD EDGE ROLLER DOUBLE**

Easy-to-read scale (mm + inch), loops to hang from work belt, bending height: 1/4" – 7 7/8"



91620000	7.72 lb	14 5/8" x 8 7/8"	1
----------	---------	------------------	---

**7. FREUND MAXI EDGE ROLLER**

Mobile edge rolling machine for the edging and bending of sheet metal, equipped with four guiding rollers, easy-to-read scale (mm + inch), hand grip, expandable with a second Maxi-Edge Roller and adapter to become a dual bending machine, loops to hang from work belt, bending height: 1/4" – 13 3/4"



91604000	5.12 lb	17 3/4" x 5 1/8"	1
----------	---------	------------------	---

**8. FREUND MAXI EDGE ROLLER DOUBLE**

Mobile edge rolling machine for the edging and bending of sheet metal, equipped with four guiding rollers, easy-to-read scale (mm + inch), loops to hang from work belt, bending height: 1/4" – 13 3/4"



91604100	9.81 lb	19 1/4" x 9"	1
----------	---------	--------------	---

**9. FREUND PREMIUM EDGE ROLLER**

Equipped with four guiding rollers, easy-to-read scale (mm + inch), loops to hang from work belt, expandable with a second Premium Edge Roller and adapter to become a dual bending machine, bending height: 1/4" – 7 7/8"



91603000	3.53 lb	11 3/4" x 5 7/8"	1
----------	---------	------------------	---

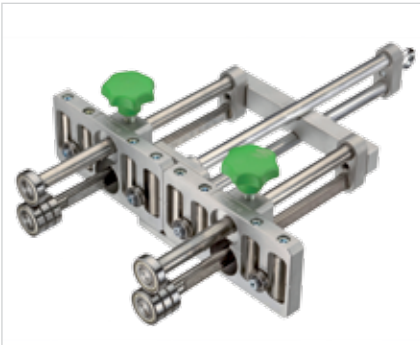


**10. FREUND PREMIUM EDGE ROLLER WITH HAND GRIP**

Mobile edge rolling machine for edging and bending of sheet metal, applicable to all prevalent materials, equipped with four guiding rollers, easy-to-read scale (mm + inch), loops to hang from work belt, hand grip, expandable with a second Premium Edge Roller and adapter to become a dual bending machine.



91600000	4.29 lb	11 3/4" x 5 7/8"	1
----------	---------	------------------	---



**11. FREUND PREMIUM EDGE ROLLER DOUBLE**

Equipped with four guiding rollers, easy-to-read scale (mm + inch), loops to hang from work belt, bending height: 1/4" – 7 7/8"



91601000	8.60 lb	14 3/4" x 11 3/4"	1
----------	---------	-------------------	---



**12. ADAPTER FOR FREUND EDGE ROLLER**

Adapter to become a dual bending machine

for Edge Roller Premium double	91600001	1.90 lb	13" x 7 1/8"	1
for Edge Roller Standard double	91600002	1.76 lb	13" x 5 1/2"	1
for Edge Roller Disc Roller double	91610001	2.32 lb	9 7/8" x 2"	1



**13. HAND GRIP FOR FREUND EDGE ROLLER**

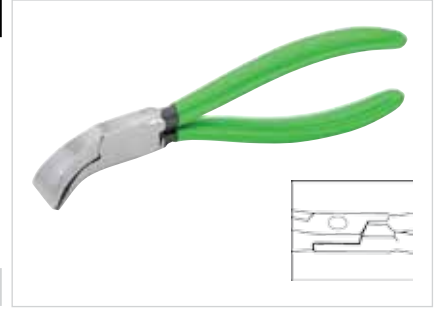
Hand Grip for FREUND Maxi-, Premium- and Standard Edge Roller

91600003	0.77 lb	11 3/4" x 4 3/8"	1
----------	---------	------------------	---



**14. SMALL CLINCHING PLIERS**

45° bent, lap joint, precoated handles



depth of insertion      jaw width

1 1/8"	7/8"	01090022	0.42 lb	7/8"	1
--------	------	----------	---------	------	---

**15. CLINCHING PLIERS**

45° bent, lap joint, precoated handles



depth of insertion      jaw width

1 7/8"	1 5/8"	01090040	1.32 lb	1 5/8"	1
1 7/8"	2 3/8"	01090060	1.54 lb	2 3/8"	1
1 7/8"	3 1/8"	01090080	2.04 lb	3 1/8"	1

**16. CLINCHING PLIERS**

90° bent, lap joint, precoated handles



depth of insertion      jaw width

2 1/8"	1 5/8"	01092040	1.32 lb	1 5/8"	1
2 1/4"	2 3/8"	01092060	1.65 lb	2 3/8"	1
2 5/8"	3 1/8"	01092080	2.32 lb	3 1/8"	1

**17. CLINCHING PLIERS**

45° bent, lap joint, precoated handles

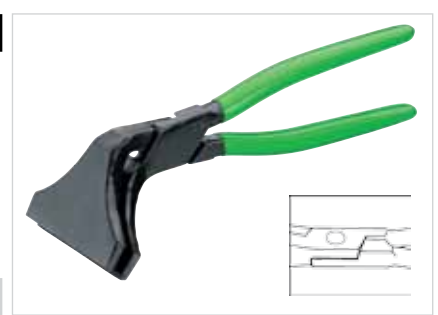


depth of insertion      jaw width

2 5/8"	3 7/8"	01090100	2.54 lb	3 7/8"	1
--------	--------	----------	---------	--------	---

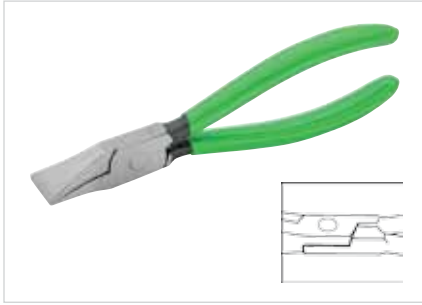
**18. BROAD CLINCHING PLIERS**

45° bent, lap joint, precoated handles



depth of insertion      jaw width

2 1/2"	3 7/8"	01090101	1.98 lb	3 7/8"	1
--------	--------	----------	---------	--------	---



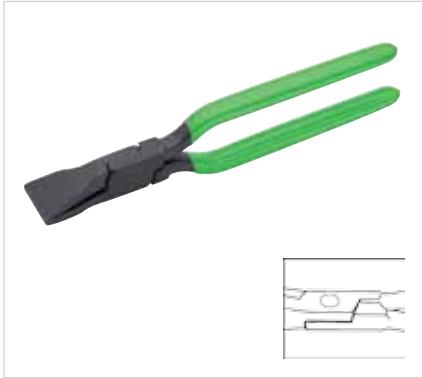
**19. SMALL CLINCHING PLIERS**

Straight, lap joint, precoated handles



depth of insertion	jaw width
1 1/4"	7/8"

01080022	0.4 lb	7/8"	1
----------	--------	------	---



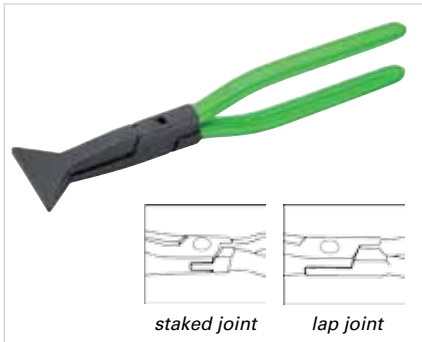
**20. CLINCHING PLIERS**

Straight, lap joint, precoated handles



depth of insertion	jaw width
1 7/8"	1 5/8"
2 1/2"	2 3/8"
2 1/2"	3 1/8"

01080040	1.21 lb	1 5/8"	1
01080060	1.54 lb	2 3/8"	1
01080080	1.98 lb	3 1/8"	1



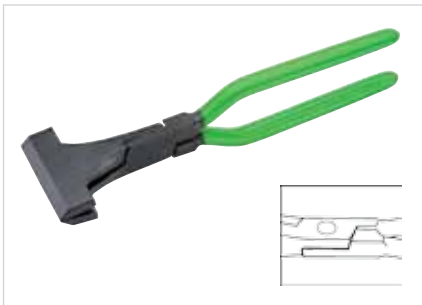
**21. CLINCHING PLIERS**

Straight, lap joint, precoated handles



	jaw width
staked joint	3 1/8"
lap joint	3 1/8"

01100080	1.87 lb	3 1/8"	1
01100081	1.76 lb	3 1/8"	1



**22. CLINCHING PLIERS**

Straight, lap joint, precoated handles



depth of insertion	jaw width
2 1/2"	3 3/8"

01080100	2.54 lb	3 3/8"	1
----------	---------	--------	---



**23. BROAD CLINCHING PLIERS**

Straight, lap joint, precoated handles



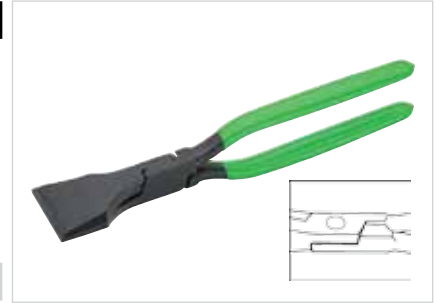
depth of insertion	jaw width
2 1/4"	3 7/8"

01080101	1.92 lb	3 7/8"	1
----------	---------	--------	---



**24. CORNER CLINCHING PLIERS**

Lap joint, precoated handles



depth of insertion	jaw width
2 5/8"	2 3/8"

01170060	2.76 lb	2 3/8"	1
----------	---------	--------	---

**25. SEAM OPENING PLIERS**

Lap-on joint, precoated handles



jaw width 1 1/8"
------------------

01070250	0.99 lb	9 7/8"	1
----------	---------	--------	---

**26. FLAT NOSE PLIERS**

Precoated handles



depth of insertion 1 3/4"
---------------------------

01370240	0.93 lb	9 1/2"	1
----------	---------	--------	---





**27. ROUND NOSE PLIERS**

Precoated handles



depth of insertion 2 3/8"

01360240

0.36 lb

9 1/2"

1



**28. SEAMING TONGS**

Straight, lap joint



depth of insertion      jaw width

4 3/8"	4 3/4"
6 3/8"	6 1/4"
6 7/8"	7 1/8"
7 1/4"	7 1/8"

01141120

4.08 lb

4 3/4"

1

01141160

6.62 lb

6 1/4"

1

01141180

7.50 lb

7 1/8"

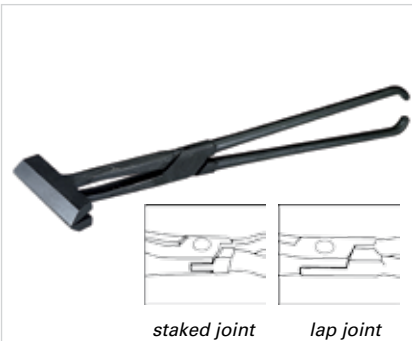
1

01141200

7.17 lb

7 1/8"

1



**29. SEAMING TONGS**

Straight, skewed on one side



depth of insertion 175 mm      jaw width 7 1/8"

staked joint

01140181

7.50 lb

7 1/8"

1

lap joint

01141181

7.50 lb

7 1/8"

1



**30. SEAMING TONGS**

Bent, lap joint

depth of insertion      jaw width

4 3/8"	4 3/4"
6 1/4"	6 1/4"
6 3/4"	7 1/8"
6 3/4"	7 1/8"

01161120

4.08 lb

4 3/4"

1

01161160

6.50 lb

6 1/4"

1

01161180

6.73 lb

7 1/8"

1

01161200

7.06 lb

7 1/8"

1





**31. SQUARE SEAM FOLDER 111 WFSCH**

This manually-operated square seam folder joins SPM 30/80 profiles, smooth lead-on avoid marks at the transitions. It is easy to handle when working on extreme angular sheeting. The tool may also be used for vertical, as well as horizontal beads. tool width: 8 5/8" claw height: 2" length: 15 3/8"



durable baked epoxy finish

91100000	4.41 lb	8 5/8"	1
----------	---------	--------	---

**32. SQUARE SEAM FOLDER, UPRIGHT 128 WFSCHST**

For prefabricated SPM-profiles on small roof areas. For efficient use and transportation handles can be adjusted in length in 3 steps, tool width: 8 5/8" height: 28 3/8" length: 2 3/4"

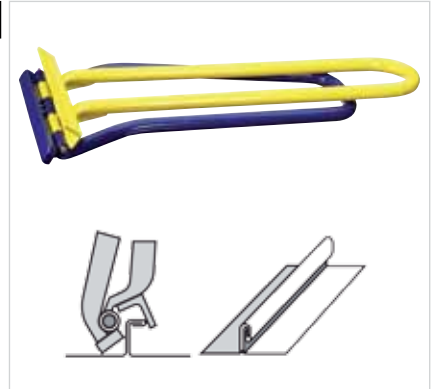


durable baked epoxy finish

91101000	7.72 lb	8 5/8"	1
----------	---------	--------	---

**33. TWIN SQUARE SEAM FOLDER 117 WDF**

Allows simple and quick shaping of locked square seam into double seam in just one operation. Do not use to close a square seam! tool width: 8 5/8" claw height: 2" length: 19"



durable baked epoxy finish

91170000	5.51 lb	8 5/8"	1
----------	---------	--------	---

**34. TWIN SQUARE SEAM FOLDER, UPRIGHT 131 WDFST**

For use like no. 91170000 Do not use to close a square seam! tool width: 8 5/8" height: 2 3/4" length: 28 3/8"



durable baked epoxy finish

91171000	7.94 lb	8 5/8"	1
----------	---------	--------	---



**35. EAVES EDGER 105 TK**

Tool width of 10" allows quick and accurate sheet metal shaping, constructing eaves, gutters, dormer windows, etc. If needed, a spacer can be put on at the eccentric pivot to create edges in excess of 90° for high lips and waterbeads at inner eaves. tool width: 9 7/8"; claw depth: 1 1/2"; length: 9 1/2"



durable baked epoxy finish

91070000

3.75 lb

9 7/8"

1



**36. EAVES CLOSING JAW 106 TSCA**

The jaw width of 8 3/4" enables quick and accurate folding of eaves sheet, tool width: 8 5/8"; height: 2 3/8"; length: 15 3/4"



durable baked epoxy finish

91080000

4.63 lb

8 3/4"

1



**37. EAVES RULER 120 TRL**

One time adjustable scale of required length of the sheet excess (incl. extension). Put eaves ruler to the edge of the eaves sheet, push along and mark out, then the cut sheets can be folded cleanly with the eaves edger or eaves closing tongs system Rau.



durable baked epoxy finish

91230000

0.44 lb

4 3/4"

1



**38. SEMICIRCULAR DORMER SQUARE SEAM FOLDER 119 RGS + 127 RGS**

The square seam folder is the ultimate tool for joining prefabricated SPM-profiles. Even with dormer windows with a small radius, you can join locked seams without difficulty. It can be used to tack up lengthwise beads to prevent withdrawal from folding press. Tool width: 2 1/2"; height: 2 1/8"; length: 13"

119 RGS durable baked epoxy finish (long)

91180000

2.21 lb

12 3/4"

1

127 RGS durable baked epoxy finish (short)

91181000

1.98 lb

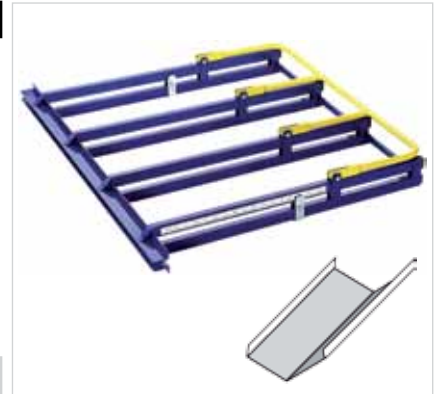
8 1/4"

1



**39. SHEET BENDING JAW 101 BG 1010**

Very easily, you can create leakproof, seamless gutters, ducts, high wall sheeting, wall connections, etc. all at the jobsite, unlimited working length, jaw width: 39 3/8"; jaw depth: 31 1/2"; tool depth: 4 3/8"



durable baked epoxy finish	91030000	30.87 lb	39 3/8"	1
----------------------------	----------	----------	---------	---

**40. SHEET BENDING JAW 102 BG 500**

Used like no. 91030000, jaw width: 19 5/8"; jaw depth: 31 1/2"; tool depth: 4 3/8"



durable baked epoxy finish	91040000	15.21 lb	19 5/8"	1
----------------------------	----------	----------	---------	---

**41. TILE EDGER 115 PEK**

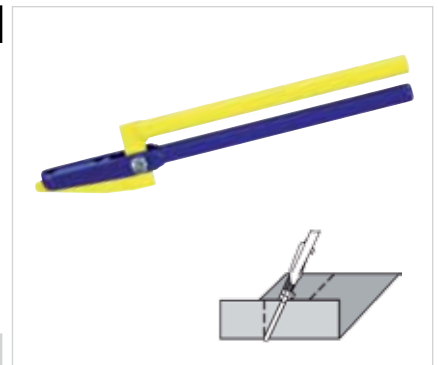
Get a unique tool to create any slope on tile edges, jaw length: 9 7/8"; height: 1 1/2"; tool length: 27 1/2"



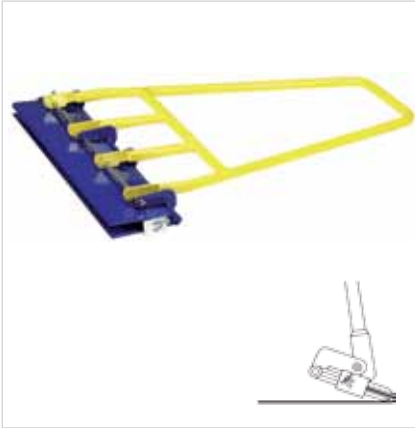
durable baked epoxy finish	91150000	6.62 lb	9 7/8"	1
----------------------------	----------	---------	--------	---

**42. TILE EDGER, SMALL 116 PEK**

Get a unique tool to create any slope on tile edges, jaw length: 2 3/4"; height: 1 1/2"; tool length: 14 1/4"



durable baked epoxy finish	91160000	1.65 lb	2 3/4"	1
----------------------------	----------	---------	--------	---



**43. TIN EDGE JAW 104 BKZ**

Upright beads at double seam roofing are built effortlessly with the tin edge jaw. Tool width is 19 3/4" and jaw depth selectable from 3/4" to 2 3/8". The upright bead is built into steps. First erect lip by 45° at its full length, then it is bend up to 90°. Tool width: 19 5/8"; length: 24 1/2"; tong depth: 2 3/8"



durable baked epoxy finish

91010000

15.44 lb

19 3/4"

1



**44. CLIPPING SHEARS SYSTEM 133 AKW**

These clipping shears are the optimal solution for gaining time and getting an accurate finish of a gutter and eave. Clipping plain sheet, upright-seam and square-seam can be done. The AKW is easy to handle in the workshop, as well as at the job side clipping preprofiled beads on the roof or at facades. After clipping the lower bead the upper one can be mounted and seamed. It may be clipped after roofing is complete. This allows effective work and the investment will pay for itself quickly. tool width: 8 5/8"; height: 4"; length: 29 1/8"



durable baked epoxy finish

91190000

11.03 lb

8 5/8"

1



**45. HAND CUTTING SYSTEM HSG**

Particularly for exact and clean cuts on all kinds of sheet metal up to thickness of max. 21 gauge, cutting length 39 1/4".

The set contains:

- hand cutter
- guide bar
- gloves



91240000

2.65 lb

43 3/4"

1



**46. TWINSEAM FOLDER 112 DPF**

Just by spreading the levers, this tool manually creates a lock seam. Dosed application of weight onto the implement relieves strain from the arms. Cost saving of the twin seam folder is without competition working small roof-areas and corner-constructions.  
The implement is independent of any current source.  
It's application starts at a 1 1/2"- 2" seam height.  
Tool width: 8 5/8"; length: 33 1/2"; width: 6 3/8"



91060000	13.89 lb	8 5/8"	1
----------	----------	--------	---

durable baked epoxy finish

**47. SINGLE-HANDED EDGER 108 HK**

Suitable for sheet metal up to 3/8" this is the all-round-tool for roofer, plumber, tin smith and panel beater, adjustable stops support making edges from 1/4" to 3/4" freehand, with a tool width of 2 3/8" you bend sheet metal in any length, tool width: 2 1/2", height: 3 1/8", length: 11 5/8"



91110000	1.54 lb	2 1/2"	1
----------	---------	--------	---

**48. CRIMPER / FOLDING TONGS 114 FD**

This snaker is a unique tool tool that can taper any tube caliber by setting a few pleats. Most times just for 2 3/4" pleats make an accurate fitting. High stability of the joint tubes gained by a large supporting surface is the big advantage of this tool.  
Tool length: 13 3/8", jaw depth: 2 3/4", width: 1 5/8"



91020000	1.76 lb	13 3/8"	1
----------	---------	---------	---

durable baked epoxy finish



**49. PUNCH SNIPS**

Stainless steel, HRC 59 (blue)



right  
left

01222250	1.10 lb	9 <sup>7</sup> / <sub>8</sub> "	1
01223250	1.10 lb	9 <sup>7</sup> / <sub>8</sub> "	1



**50. PUNCH SNIPS**

HSS-special stainless steel with high carbide blades, HRC 65 (purple/black) for stainless steel sheets



right  
left

01228475	1.12 lb	10 <sup>7</sup> / <sub>8</sub> "	1
01229475	1.14 lb	10 <sup>7</sup> / <sub>8</sub> "	1



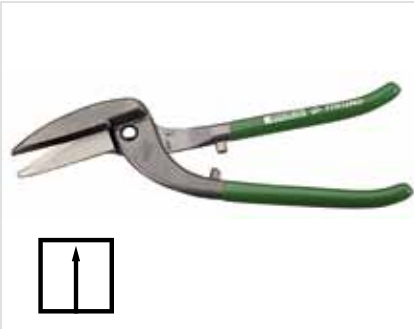
**51. PUNCH SNIPS WITH CURVED BLADES**

Stainless steel, HRC 59 (blue)



right  
left

01224275	1.10 lb	10 <sup>7</sup> / <sub>8</sub> "	1
01225275	1.10 lb	10 <sup>7</sup> / <sub>8</sub> "	1



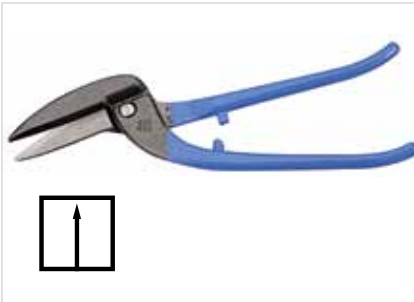
**52. TINMEN'S/PELIKAN SNIPS**

PVC-coated handles, HRC 56 (green)



right  
right  
left

01230300	1.65 lb	11 <sup>3</sup> / <sub>4</sub> "	1
01230350	1.83 lb	13 <sup>3</sup> / <sub>4</sub> "	1
01231300	1.62 lb	11 <sup>3</sup> / <sub>4</sub> "	1



**53. TINMEN'S/PELIKAN SNIPS**

Stainless steel, HRC 59 (blue)



right  
left

01232300	1.61 lb	11 <sup>3</sup> / <sub>4</sub> "	1
01233300	1.61 lb	11 <sup>3</sup> / <sub>4</sub> "	1

**WITH FREUND YOU WILL CUT WELL**

**TYPES OF SNIPS**

*Standard Snips -  
forged from a single piece;  
the cutting force is determined by the proportion of  
handle length to cutting length.*

*Snips with leverage -  
Cutting head and handle create mounted flexibly, so  
that a leverage is obtained. The leverage means that  
less force is required.*

**RIGHT CUTTING / LEFT CUTTING SNIPS**

*Right snips allow an easy cutting of right circles.  
Left snips allow an easy cutting of left circles.*



#	cutting performance in gauge		
	zinc	stainless steel	
01205000	22	25	
01206000	22	25	
01230300	18	22	
01232300	18	22	
01235300	18	22	
01240251	18	22	
01282240	18	22	
01292260	18	18	

01201000	15	15	
01202000	17	17	
01210250	18	22	
01212250	18	22	

01240250	18	22	
01260250	18	22	
01296200	15	18	

01220250	18	22	
01222250	18	22	
01224275	18	22	
01226275	18	22	
01228475	18	22	
01270250	18	22	
01272250	18	22	

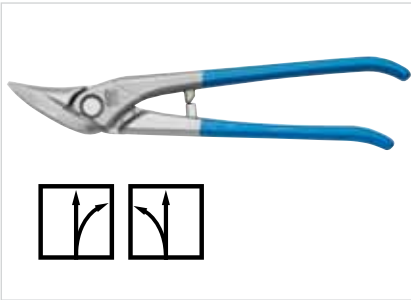
#	cutting performance in gauge		
	zinc	stainless steel	
01290180	20	22	
01250260	18	22	
01252260	18	22	
01256280	18	22	
01280240	15	18	
01280260	15	18	
01290240	15	18	
01290260	15	18	
01292260	15	18	
01293260	15	18	
01294260	15	18	
01295260	15	18	

01297200	18	22	
----------	----	----	--

01343000	15	18	
----------	----	----	--

- straight, continuous
- release
- straight and right cutting

- straight and left cutting
- straight, right and left cutting
- circular



**54. SHAPE AND STRAIGHT CUTTING SNIPS**

*Stainless steel, HRC 59 (blue)*



right  
left

01252260	1.09 lb	10 1/4"	1
01253260	1.09 lb	10 1/4"	1



**55. SHAPE AND STRAIGHT CUTTING SNIPS**

*Special stainless steel with high carbide blades, HRC 65 (purple/black)*



right  
left

01256280	1.32 lb	11"	1
01257280	1.35 lb	11"	1



**56. GENUINE AVIATION SNIP**

*Stainless steel, compound leverage, for stainless steel sheets, HRC 58-60, bicomponent grip*



straight

01282240	0.63 lb	10 1/4"	1
----------	---------	---------	---





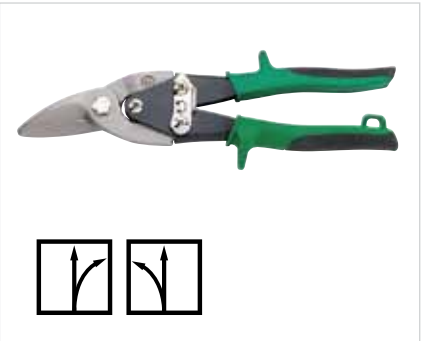


**57. GENUINE AVIATION SNIPS**

Stainless steel, compound leverage, for stainless steel sheets, HRC 58-60, bicomponent grip



right	01280240	0.83 lb	9 ½"	1
left	01281240	0.82 lb	9 ½"	1

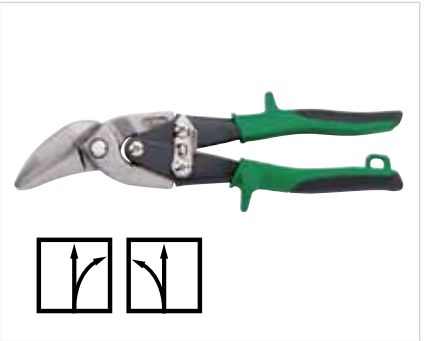


**58. OFFSET CUTTING SNIPS**

Stainless steel, compound leverage, for stainless steel sheets, HRC 58-60, bicomponent grip



right	01290240	0.86 lb	9 ½"	1
left	01291240	0.86 lb	9 ½"	1



**59. OFFSET CUTTING SNIPS**

Stainless steel, compound leverage, for stainless steel sheets, HRC 58-60, bicomponent grip



right	01290260	1.20 lb	10 ¼"	1
left	01291260	1.20 lb	10 ¼"	1



**60. SHAPE CUTTING SNIPS**

Special high quality steel, double compound leverage, for stainless steel sheets, HRC 61



right	01292260	0.99 lb	10 ¼"	1
left	01292261	0.99 lb	10 ¼"	1



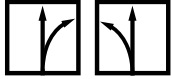
**61. STRAIGHT CUTTING SNIPS**

Special high quality steel, double compound leverage, for stainless steel sheets, HRC 61



right	01294260	1.22 lb	10 ¼"	1
left	01294261	1.22 lb	10 ¼"	1



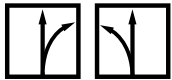


**62. SHAPE AND STRAIGHT CUTTING SNIPS**

HSS-stainless steel, compound leverage, for stainless steel sheets, HRC 65



right	01295260	1.15 lb	10 1/4"	1
left	01295261	1.15 lb	10 1/4"	1

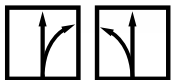


**63. OFFSET CUTTING SNIPS**

Special high quality steel, double compound leverage, for stainless steel sheets, HRC 61



right	01293260	1.06 lb	10 1/4"	1
left	01293261	1.06 lb	10 1/4"	1



**64. SHAPE AND STRAIGHT CUTTING SNIPS „MINI“**

Special high quality steel, double compound leverage, for stainless steel sheets, HRC 61



right	01290180	0.88 lb	7 1/8"	1
left	01290181	0.88 lb	7 1/8"	1



**65. UNIVERSAL TIN SNIPS, LONGSTYLE PROFESSIONAL**

Compound leverage, PVC-coated handles

right	01240251	0.99 lb	11"	1
left	01241251	0.99 lb	11"	1



**66. NOTCH PUNCHING MACHINE**

Ideal for notching vinyl sheet coated, zinc or aluminum, makes a notch of 1/8" x 5/8"; adjustable depth stop from 3/8"-7/8"; punches up to a thickness of 22 gauge



	00360020	1.82 lb	12 1/4"	1
--	----------	---------	---------	---



**67. PUNCHING MACHINE**

With replaceable punches, opening 3/8", precise graduation, adjustable depth stop up to 1 3/4", with punches

Punch	ø 0.13 inch	ø 0.16 inch	ø 0.19 inch	ø 0.24 inch
iron sheets	16 Gauge	16 Gauge	18 Gauge	22 Gauge
stainless steel	18 Gauge	20 Gauge	22 Gauge	25 Gauge
aluminium	11 Gauge	14 Gauge	14 Gauge	16 Gauge



00360010    2.13 lb    10 3/8"    1



**68. HAND NOTCHER 35**

For straight and parallel incisions eg. square seam folding on wall connection edges, the notching length of 3/8" enables continuous uninterrupted cuts, suitable for sheet steel up to 22 gauge



00371000    1.17 lb    11 3/4"    1



**69. SCRIBER / SCRATCH/MARKING TOOL**

Stainless steel, American measure 1/8" - 4 3/4"



01133000    0.14 lb    5 1/2"    1



**70. FILZ-FOLDER**

Stainless steel, for bending metal sheets



01131000    0.66 lb    5 1/2" x 4 3/4"    1



**71. FLAT SCRAPER**

Steel forged, long blade, prism 3/4" x 3/4" slightly slanted, 1/4" drilled

01150100    4.08 lb    3 7/8"    1





**72. FLAT SCRAPER**

Forged, long blade, prism 1" x 1" slightly slanted, 1/4" drilled



01150000	5.51 lb	5 1/2"	1
----------	---------	--------	---



**73. DOUBLE WELT IRON**

Forged, prism height 1" and 1 3/8"



01110000	7.50 lb	5 1/2"	1
----------	---------	--------	---



**74. SQUEEZING FOLDING PLIER**

Forged of special steel, depth 5 1/2"



01130000	1.87 lb	5 1/2"	1
----------	---------	--------	---



**75. HAMMER FOR ANGLE FLAT SCRAPER**

Polished finish



A=7/8" / B=1/8"

01121000	10.58 oz	4 3/4"	1
----------	----------	--------	---



**76. ANGLE FLAT SCRAPER**

Forged, bright working surfaces, polished finish



01120000	3.42 lb	11 3/4"	1
----------	---------	---------	---



**77. GROOVING HAMMER, DIFFERENT FACES**

Fine polished finish, faces differently bent, one face vertical



A= 3/8" / B=1 1/2"

01691400	14.11 oz	13 3/8"	1
----------	----------	---------	---

**78. POLISHING HAMMER**

polished finish, 1 lightly bent, 1 strongly bent face



A=1 1/2" / B=1 1/2"

70710750	26.46 oz	5 1/2"	1
----------	----------	--------	---

**79. LOCKSMITH'S HAMMER**

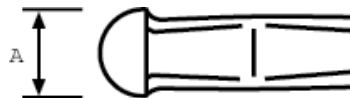
DIN 1041, curved hardwood handle, special oval bolster



01710400	14.11 oz	12"	1
----------	----------	-----	---

**80. POLISHING HAMMER**

Polished finish, 1 highly bent face



A=1 3/8"

70730400	14.11 oz	3 1/4"	1
----------	----------	--------	---



**81. TINMAN'S HAMMER, PVC**

PVC, angular



01674000	19.40 oz	3 1/4" x 3 1/4" x 5 1/2"	1
----------	----------	-----------------------------	---



**82. PVC HAMMER**

PVC, round

01678060	15.87 oz	Ø 2 3/8" x 4 1/4"	1
01678070	19.05 oz	Ø 2 3/4" x 4 3/4"	1
01678080	27.87 oz	Ø 3 1/4" x 5 1/2"	1



**83. PVC HAMMER**

PVC, angular



01678145	19.40 oz	5 3/4" x 1 3/8" x 3"	1
01678155	21.16 oz	6 1/8" x 1 3/8" x 3 3/8"	1



**84. DEAD BLOW SOFT FACES HAMMER**

With polished finish, lacquered, curved Hickory-handle, head of shock-resistant nylon, nature



Ø 1 1/4"	01670032	21.16 oz	13 3/4"	1
Ø 2"	01670050	41.62 oz	15 1/2"	1



**85. WOODEN HAMMER**

With metal ring



01676000	13.05 oz	Ø 2 3/8"	1
----------	----------	----------	---

**86. TINMAN'S HAMMER**

Edged, head made of beech, with hardwood handle



01673000	20.46 oz	3 1/2" x 2"	1
----------	----------	-------------	---

**87. TINMAN'S HAMMER**

Round, head made of beech, with hardwood handle



01672000	19.40 oz	Ø 3 1/8" x 6 1/4"	1
----------	----------	----------------------	---



<http://www.freund-tools.com/videos.html>  
or scan this QR-Code



**SOLDERING TOOLS**

## **MAKE YOUR TOOL A FRIEND**

**FREUND OFFERS A COMPLETE LINE OF SOLDERING EQUIPMENT FOR ALL SHEET METAL ROOFING NEEDS:**

- ✓ *The Express Soldering irons with self ignition/ combustion chamber system/ built in gas canisters*
- ✓ *A variety of tips in different sizes and weights*
- ✓ *The unbeatable coated tips for soldering without filling and reforging*
- ✓ *The soldering gel*
- ✓ *The small things that you need to start the job right away, such as regulators, quick connects, hoses, brushes and ammonia stones*





**88. SOLDERING IRON SET IN A METAL BOX**

- Automatic soldering iron with Piezo ignition and gas-cartridge no. 66444000
- 2 spare gas cartridges no. 64440086
- Bottle for soldering fluid no. 03331000
- 2 soldering fluid brushes no. 03390025



66440000	6.84 lb	14 1/8"	1
----------	---------	---------	---

**89. PREMIUM SOLDERING KIT**

Includes express soldering iron for zinc, copper and stainless with automatic push button ignitor, swivel hose attachment, 70 seconds start up time, iron length 11 5/8," iron weight 34.5 oz

Also included in the premium soldering kit:

- Medium Tip (9 oz, 3 3/4" length)
- Regulator (30 - 60 PSI, UL listed, compact design)
- LP Gas Quick Connects (for fast connection and disconnect of soldering iron and hose, no further tools needed, made of brass, LH 9/16)
- Hose (12" foot hose, UL listed)
- Soldering Block Holder (ammonia stone for soldering, brush holder, flux canister)
- Soldering Flux - Gel (for new metals (zinc and copper), gel is easy to handle and simple to use)
- Soldering Fluid Bottle (for soldering fluid, acids, etc., with screw cap)
- Soldering Fluid Brushes (25 pcs. in a bag, for soldering fluid, acids, oil, etc.)
- STACK - ON Pro-Tough Tool Box (16," galvanized steel hinge pins, large riveted nickel plated, steel draw bolts secure the lid, includes a deluxe, removable tray, fully lockable with padlock eye)



66440001	8.27 lb	22 1/8"	1
----------	---------	---------	---

**90. STANDARD SOLDERING KIT**

Includes express soldering iron for zinc, copper and stainless with swivel hose attachment, 80 seconds start up time, iron length 13 1/4," iron weight 33 oz

Also included in the standard soldering kit:

- Medium Tip (9 oz, 3 3/4" length)
- Regulator (30 - 60 PSI, UL listed, compact design)
- LP Gas Quick Connects (for fast connection and disconnect of soldering iron and hose, no further tools needed, made of brass, LH 9/16)
- Hose (12" foot hose, UL listed)
- Soldering Fluid Brushes (25 pcs. in a bag, for soldering fluid, acids, oil, etc.)
- STACK - ON Pro-Tough Tool Box (16," galvanized steel hinge pins, large riveted nickel plated, steel draw bolts secure the lid, includes a deluxe, removable tray, fully lockable with padlock eye)



66440002	7.27 lb	22 1/8"	1
----------	---------	---------	---

**91. SOLDERING IRON WITH PATENTED CERCO - BURNER**

With Piezo ignition and rotational tube connection, technical details: a circular flame surrounds the soldering iron .tip, allowing a quick heat-up with reduced gas consumption. Soldering iron tip: 360° turnable, inclination angle adjustable by 10°, available in 4 models, metal bow: adjustable in 2 positions, with spring lock - 100 % windprotection through combustion chamber -immediately ready for use through a new burning technique; the working temperature is reached after 1 minute -turnable tube makes makes handling easy -armoured piezo-system with approx. 50.000 ignitions and 2 years warranty -GS/TÜV homologated



66434000	2.21 lb	13 3/8"	1
66444002	0.44 lb	1 5/8"	1

Spare Piezo Ignitor



**92. SOLDERING IRON WITH CERCO - BURNER**

With rotatable tube connection



66432001	1.98 lb	13 3/8"	1
----------	---------	---------	---



**93. AUTOMATIC SOLDERING IRON WITH GAS CARTRIDGE**

- with patented CERCO-burner and Piezo ignition
- in each position immediately ready for use through its special cartridge
- burning duration 1-2 hours through optimized burner
- ideal for repairs
- extremely handy
- no tube, no gas bottle, TÜV/GS homologated



Spare Piezo Ignitor

66444000	2.43 lb	14 1/8"	1
66444002	0.44 lb	1 5/8"	1



**94. HIGH PERFORMANCE PROPANE SOLDERING IRON WITH COPPER PIECE**

This high performance propane soldering iron is a sophisticated, quality product that is made only from the finest materials such as stainless steel, solid brass and teflon. Exceptionally heavy duty, low maintenance and easy to operate, it is ideal for everyday use. Despite moisture, solder chemicals or any other tough conditions, this iron will continue to function at the highest level. The high performance propane soldering iron burns straightaway. In less than 55 seconds the 0.77 lb soldering bit heats to the operating temperature. There's no easier or more time-saving method of soldering available. You can work with the powerful and constant flame even in strong winds and without using a windbreak. Ergonomically designed handle made of hard wood, very well insulated. Rotatable tube connection, for either M10x1 or G 3/8" LH. Valve seal made of Teflon. Back cap and valve rod made of stainless steel. Performance: 1,67 KW, Consumption with 1,5 bar: 130 g/h.

with copper tip, pointed shaped

66434100	2.18 lb	16 1/2"	1
----------	---------	---------	---



**95. HOT AIR GUN**

Hot air gun with automatic Piezo ignition, adjustable from 752°F - 1382 °F, supplied with 2 nozzles (flat and reflector) and one gas cartridge 64440085. For preheating of zinc and repair works on the roof (Bitumen, PVC, EPDM etc.)



66510000	0.49 lb	4 3/8"	1
----------	---------	--------	---



**96. HIGH PERFORMANCE SPARE GAS CARTRIDGE POWER GAS**

Top burning capacity, temperature 3632°F 6 bar pressure, recommended for low surrounding temperature, burning duration approx. 1-2 hours, suitable for soldering irons and heat guns, 36 % Propene



	64440086	0.25 lb	6 3/4" / 110 g	12
--	----------	---------	----------------	----

**97. SOLDERING IRON TIP BENT**



bent tip	66480002	0.53 lb	3 3/4"	1
----------	----------	---------	--------	---

**98. SOLDERING IRON TIP**



light tip	66480003	0.41 lb	3 7/8"	1
-----------	----------	---------	--------	---

**99. SOLDERING IRON TIP**



middle tip	66450001	0.52 lb	4 3/8"	1
------------	----------	---------	--------	---

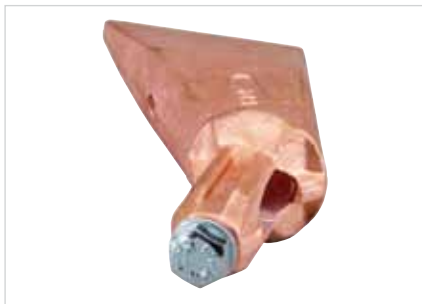
**100. SOLDERING IRON TIP**



heavy tip	66480001	0.69 lb	5 3/4"	1
heavy tip	66490004	1.46 lb	5 3/4"	1

**101. SOLDERING IRON TIP TURBO**

20% faster heating of the copper tip by a special boring



middle tip	66460001	0.52 lb	4 3/8"	1
heavy tip	66470001	0.69 lb	5 3/4"	1



**102. SOLDERING IRON TIP, LONG-LIFE**

Soldering without ammonia stone and reworking

bent tip	66481002	0.53 lb	3 3/4"	1
----------	----------	---------	--------	---



**103. SOLDERING IRON TIP, LONG-LIFE**

light tip	66481003	0.41 lb	3 3/8"	1
-----------	----------	---------	--------	---



**104. SOLDERING IRON TIP, LONG-LIFE**

middle tip	66451001	0.52 lb	4 3/8"	1
------------	----------	---------	--------	---



**105. SOLDERING IRON TIP, LONG-LIFE**

heavy tip	66481001	0.70 lb	5 3/4"	1
-----------	----------	---------	--------	---



**106. SOLDERING IRON TIP**

Hammer shaped with 3 7/8" pin

for soldering iron **94.**

66490001	0.55 lb	3 1/2"	1
66490002	0.77 lb	3 3/8"	1
66490003	1.10 lb	3 7/8"	1



**107. SOLDERING IRON TIP**

Pointed shaped with 3 7/8" pin

for soldering iron **94.**

66490005	0.55 lb	8 1/8"	1
66490006	0.77 lb	8 1/2"	1
66490007	1.10 lb	8 3/4"	1



**108. ZINNLUX LONG-LIFE SOLDERING TIP**

Pointed shaped, coated, with 3 7/8" pin

for soldering iron **94.**

66490008	0.53 lb	3 3/4"	1
----------	---------	--------	---



**109. ZINNLUX LONG-LIFE SOLDERING TIP**

Soldering without ammonia stone and reworking, hammer shaped with 3 7/8" pin



for soldering iron <b>94.</b>	66491002	0.53 lb	3 3/4"	1
-------------------------------	----------	---------	--------	---

**110. QUICK CONNECTOR**

2 part clutch with automatic gas cut for tool-free replacing of the torch with connected gas cylinder.



	66640001	0.26 lb	2 3/4"	1
--	----------	---------	--------	---

**111. HIGH-PRESSURE HOSE**

HD-rubber hose, 12" foot hose, UL listed



	66631000	1.87 lb	12"	1
--	----------	---------	-----	---

**112. HIGH-PRESSURE REGULATOR**

High-pressure regulator, 30 - 60 PSI, UL listed

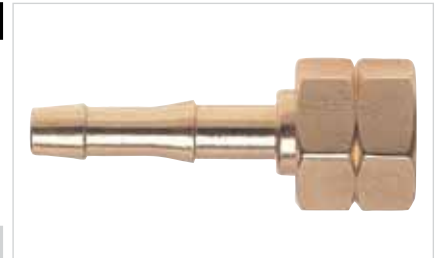


	66620011	0.73 lb	5 3/4"	1
--	----------	---------	--------	---

**113. HOSE COUPLING**

Threaded hose couplings with left hand thread, hose nipples with cap nuts

for soldering iron **94.**



Screw thread M10x1LH, Ø 1/8" - Nipple	66650000	0.02 lb	SW 12 x 28	1
---------------------------------------	----------	---------	------------	---



**114. STAND**

Foot stand and suspension hook for all heavy-duty soldering irons

for soldering iron <b>94.</b>	66420100	0.88 lb	3 3/8" x 3 1/4"	1
-------------------------------	----------	---------	-----------------	---



**115. WIND PROTECTION**

For all heavy duty soldering irons, made of robust sheet steel

for soldering iron <b>94.</b>	66420200	0.22 lb	2 7/8"	1
-------------------------------	----------	---------	--------	---



**116. CAP FOR SCREEN HEAD**

For screen head for heavy duty propane soldering iron, made of high quality stainless steel

for soldering iron <b>94.</b>	66420300	0.02 lb	Ø 3/4" x 1 1/8"	1
-------------------------------	----------	---------	-----------------	---



**117. SCREEN HEAD**

For heavy-duty propane soldering iron, made of solid brass - with 11 bores for an optimum burning behavior

for soldering iron <b>94.</b>	66420400	0.13 lb	Ø 3/4" x 3/4"	1
-------------------------------	----------	---------	---------------	---



**118. T - SCREW**

For all heavy duty soldering irons, pin and screw made of galvanized steel - can be fixed by hand

for soldering iron <b>94.</b>	66420500	0.04 lb	1 1/2"	1
-------------------------------	----------	---------	--------	---



**119. SPARE ORIFICE**

For heavy duty propane soldering iron, made of solid brass, with 31 gauge tip bore for an optimum burning performance

for soldering iron <b>94.</b>	66420600	0.04 lb	1"	1
-------------------------------	----------	---------	----	---



**120. SPINDLE WHEEL**

Hand wheel with valve stem for KLEIN RISTA handle, manifolds, etc., made of shaped brass - valve stems made of high-quality stainless steel - gaskets of valves made of indestructible teflon - on the gas side with spring mechanism for exact flame adjustment - completely assembled

66420700	0.07 lb	Ø 7/8" x 1 1/4"	1
----------	---------	-----------------	---



**121. GAS LIGHTER**

Gun-shaped gas lighter - refill pack: 4/8" x 1/4" mm replacement flints in small box

for soldering iron **92.** and **94.**

gas lighter	66520000	0.11 lb	6 1/4"	1
replacement flints, 12 pieces	66520010	0.04 lb	Ø 7/8" x 3/8"	1



**122. FLUX FOR TIN - SOLDER**

For new metals (copper, zinc)



66400320	1.10 lb	320 g	12
----------	---------	-------	----



**123. FLUX FOR TIN - SOLDER**

For oxidized metals (copper, zinc)

66401320	1.10 lb	320 g	12
----------	---------	-------	----



**124. SOLDERING FLUID BRUSH**

Dark bristles, app. 3/8" - 5/8" wide, for soldering fluid, acids, oil etc.

25 pcs.	03390025	0.17 lb	3/8"	1
---------	----------	---------	------	---





**125. SOLDERING BLOCK HOLDER SET**

For easy soldering works, non-slip on roof



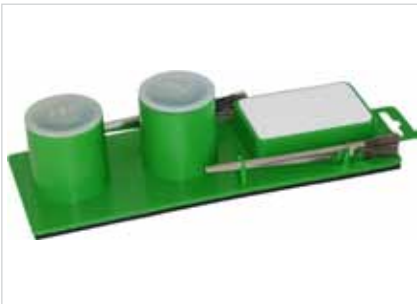
soldering stone, tank, soldering fluid brush

03310000

0.44 lb

6 7/8" x 3 3/4"

1



**126. SOLDERING BLOCK HOLDER SET DOUBLE**

For easy soldering works, non-slip on roof



soldering stone, 2 tanks, 2 soldering fluid brushes

03311000

0.60 lb

9 7/8" x 3 3/4"

1



**127. AMMONIA STONE FOR SOLDERING**

For BLOCK HOLDER SET and BLOCK HOLDER SET DOUBLE

03322000

0.22 lb

3 1/8" x 2" x 3/4"

1



**128. BOTTLE FOR HYDROCHLORIC ACID/SOLDERING FLUID**

Polyethylene bottle



Hydrochloric acid bottle, blue

03330000

0.20 lb

5 7/8"

1

Soldering fluid bottle, yellow

03331000

0.20 lb

5 7/8"

1





## **HAND NOTCHER 35**

### **A NEW FRIEND: HAND NOTCHER 35**

- ✓ *Cuts galvanized sheet metal up to 22 Gauge thick, cutting width 1/8" mm*
- ✓ *3/8" notching length, continuation of the cut is possible*
- ✓ *Material is cut without deformation and sharp edges*
- ✓ *Ergonomic, pre-coated handles with practical fastening lever*
- ✓ *Easy and light handling with a self-opening spring*



**130. GUTTER HANGER BENDER**

Castor-roll, head made of malleable casting GTW 40, zinc-plated, steel tubes with plastic handles, for a bracket strength up to 1 5/8" x 3/8"



01000600	7.06 lb	23 3/8"	1
01000800	7.72 lb	31 1/2"	1



**131. PIPE CRIMPER WITH 5 BLADES**

Progressive reduction of the pipe diameter, swaging up to 1 1/8"



01320002	1.09 lb	9 3/8"	1
----------	---------	--------	---



**132. FREUND EXPANDER**

Case including 3 matrices, for copper or zinc rain pipes. Even widening up to a depth of 1 7/8" easy handling, quick changing of the matrix, no electricity needed, therefore can be used anywhere. Fine adjustment (+/- 1mm), available sizes 3", 3 1/8" and 3 7/8"



Cone with 3 matrices and transport box

01321700	8.82 lb	16 7/8"	1
----------	---------	---------	---



**133. EXPANDER FOR PIPES**

For expanding all usual pipes of copper, aluminum and zinc, forward feed and reverse motion, hexagon



Special steel hardened, gun metal finish

01320076	3.18 lb	3"	1
01320080	3.40 lb	3 3/8"	1
01320100	4.96 lb	3 7/8"	1



**134. FREUND TOGGLE JOINT HAND RIVETER**

Head 360° rotatable, each corner can be reached, industrial quality, with 4 sizes of nose pieces



01302000	1.65 lb	11"	1
----------	---------	-----	---

**135. CHASE WEDGE**

Hardwood, with clamp



01950000	0.23 lb	Ø 2 3/8" x 7 1/4"	1
01951000	0.53 lb	Ø 3 1/2" x 8 5/8"	1

**136. BOSSING MALLET**

Hardwood



01930060	0.67 lb	2 3/8" x 5 3/8"	1
----------	---------	-----------------	---

**137. BOTTOM SWAGE**



groove width 1/4"	01040006	0.83 lb	1/4"	1
groove width 3/8"	01040008	0.96 lb	3/8"	1
groove width 1/2"	01040010	0.99 lb	1/2"	1



## **ROOFING TOOLS ... FROM FREUND**

**ROOFING TOOLS**  
**MAKE YOUR TOOL A FRIEND**

### **THE DESIGN OF ROOFS AND FACADES REQUIRES HIGH DEMANDS**

*... even for your tools. That's why we offer a large assortment of quality tools that are specialized and tailor-made for your work.*



## ROOFING

### **Slate hammers**

Leading worldwide in variety and innovation, we offer a unique assortment of the highest level. Our unique slate hammers provide the answer to any open question concerning decorative slate covering.

### **Slate rippers**

Who can offer more? There are many forms and lengths for a worldwide demand. Forged out of one piece, with a changeable or a solid blade either in stainless steel or with a flexible spring tempered blade – you decide.

### **ERGO-CUT**

Light, manageable and strong. An excellent design, practical function and high quality all speak for the ERGO-CUT, as well as for the other slate tools and machines from the FREUND-Production.

### **Various other tools**

Anvils, slate cutters and accessories, slate rippers, roofer's hammers, leather hammers, slate guillotines, tile cutters, tile nibblers, hammer tackles, chisels, trowels, scrapers, knives, saws, measuring tools, chalk lines, pressure rollers, tool boxes and bags, safety equipments, leather ware.

Internationally organized, we overcome logistic problems without any difficulties. Our products are being shipped around the world on a daily basis.

Is there anything else we can do for you?



**138. UNIVERSAL SLATER'S HAMMER**

The grinding of the facet is only on one side, for working on both sides of the anvil, with nail puller, handforged, lengthened leather handle, polished finish, head, tip and facets inductively hardened, with tip protection, patent no. 10 2006 002 234



right  
left

00020651	22.9 oz	13 <sup>3</sup> / <sub>8</sub> "	1
00021651	22.9 oz	13 <sup>3</sup> / <sub>8</sub> "	1



**139. SLATER'S HAMMER, AMERICAN PATTERN**

Nail puller, handforged, leather handle, polished finish



right  
left

00052000	24 oz	12 <sup>5</sup> / <sub>8</sub> "	1
00053000	24 oz	12 <sup>5</sup> / <sub>8</sub> "	1



**140. SLATER'S HAMMER, BRITISH PATTERN**

Nail puller, handforged, leather handle, polished finish



right  
left

00050000	23.3 oz	13"	1
00051000	23.3 oz	13"	1



**141. SLATER'S ANVIL**

Straightened, all edges ground, top bent, black



straight

00310000	1.2 lb	12 <sup>1</sup> / <sub>4</sub> "	1
----------	--------	----------------------------------	---



**142. SLATER'S ANVIL**

Straightened, all edges ground, top bent, black



bent

00311000	1.2 lb	12 <sup>1</sup> / <sub>4</sub> "	1
----------	--------	----------------------------------	---



**143. ERGO CUT NATURAL SLATE AND FIBRE-CEMENT CUTTER**

A manual cutter for all kinds of natural slate and fibre-cement up to a thickness of 1/4," fitted with a punching device, one-hand cutting and punching, ergonomical, changing blades not necessary



with punch

00920000    1.4 lb    11 3/4"    1

**144. ERGO CUT NATURAL SLATE AND FIBRE-CEMENT CUTTER**

A manual cutter for all kinds of natural slate and fibre-cement up to a thickness of 1/4," ergonomically formed for an easy and fatigue-proof working, changing blades not necessary



without punch

00910000    1 lb    11 3/4"    1





**145. SLATE GUILLOTINE - HEAVY**

Cuts all roof and facing tiles made of natural slate, artificial slate and fibre cement, body made of high-quality aluminum alloy, weight only 15.2 lb, hardened knife, especially suitable for hard and brittle slate tiles up to 3/8"; Punching device and guide sold separately



basic tool

00350000	15.2 lb	17 3/4"	1
----------	---------	---------	---



**146. GUIDE FOR SLATE GUILLOTINE**

Adjustable from 1 1/8" - 12" 0 - 90 °



00351000	2.2 lb	16 7/8"	1
----------	--------	---------	---

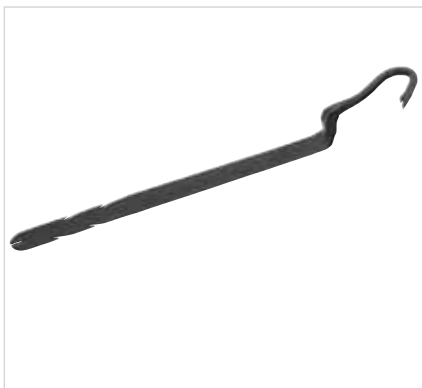


**147. PUNCHING DEVICE FOR SLATE GUILLOTINE**

A normal steel nail, 1/8" x 1 5/8", is used to punch holes



00352000	2 lb	17 3/8"	1
----------	------	---------	---



**148. SLATE RIPPER**

The traditional FREUND slate ripper, hand forged, all out of one piece of steel, with nail claw on the handle



00240470	1.6 lb	18 1/2"	1
00240525	1.7 lb	20 5/8"	1
00240600	1.8 lb	23 3/8"	1





**149. SLATE RIPPER WITH STAINLESS STEEL BLADE, STRAIGHT HANDLE**

Heavy handle with formed grip, stainless steel blade with rounded edges, flexible spring tempered blade is easily replaced by means of two special screws, special holder suitable for all blade includes assembly wrench for changing blades



2 symmetrical nail puller	00254470	2.2 lb	18½"	1
2 symmetrical nail puller	00254525	2.2 lb	20¾"	1
2 symmetrical nail puller	00254600	2.4 lb	24"	1

**150. REPLACEMENT BLADE FOR SLATE RIPPER**

Extra thin, 15 gauge ultra flexible blade, stainless steel, with screws



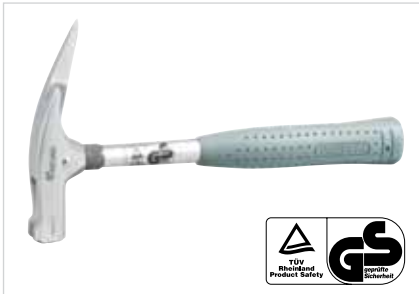
4 symmetrical nail puller	00253470	0.6 lb	18½"	1
4 symmetrical nail puller	00253525	0.6 lb	20¾"	1
4 symmetrical nail puller	00253600	0.7 lb	24"	1

**151. SPECIAL REPLACEMENT HANDLE FOR SLATE RIPPER**

Heavy handle with formed grip, screws and socket



	00250002	1.7 lb	8⅝"	1
--	----------	--------	-----	---



**152. ROOFER'S HAMMER**

Steel-tube handle with PVC grip and magnetic nail holder, polished finish, DIN 7239



grey handle

00110698

21.1 oz

12 5/8"

1



**153. ROOFER'S HAMMER**

One piece forged steel, bicomponent handle, with magnet



ultra light

00114002

17.6 oz

12 5/8"

1



**154. ROOFER'S HAMMER**

One piece forged steel hammer head, DIN 7239



with leather handle and magnet

00114000

24.7 oz

12 5/8"

1



**155. ROOFER'S HAMMER**

One piece forged steel hammer head, DIN 7239



with neoprene handle and magnet

00114001

24.7 oz

12 5/8"

1

<b>A</b>		<b>N</b>	
ADAPTER FOR FREUND EDGE ROLLER	12	NOTCH-PUNCHING MACHINE	26
AMMONIA STONE FOR SOLDERING	40		
ANGLE FLAT SCRAPER	28	<b>O</b>	
AUTOMATIC SOLDERING IRON WITH GAS CARTRIDGE	34	OFFSET CUTTING SNIPS	25, 26
<b>B</b>		<b>P</b>	
BLOCK HOLDER SET	40	PIPE CRIMPER WITH 5 BLADES	42
BOSSING Mallet	31, 43	POLISHING HAMMER	29
BOTTLE FOR HYDROCHLORIC ACID/SOLDERING FLUID	40	PREMIUM EDGE ROLLER	11, 12
BOTTOM-SWAGE	43	PREMIUM SOLDERING KIT	33
BROAD CLINCHING PLIERS	13, 14	PUNCHING DEVICE FOR SLATE GUILLOTINE	48
		PUNCHING MACHINE	27
<b>C</b>		PUNCH SNIPS	22
CAP FOR SCREEN HEAD	38	PVC-HAMMER	30
CHASE WEDGE	43		
CLINCHING PLIERS	13, 14	<b>Q</b>	
CLIPPING SHEARS SYSTEM 133 AKW	20	QUICK CONNECTOR	37
CORNER CLINCHING PLIERS	15		
CRIMPER / FOLDING TONGS 114 FD	21	<b>R</b>	
		RADIUS ROLLER	10
<b>D</b>		ROUND NOSE PLIERS	16
DEAD BLOW SOFT FACED HAMMER	30	ROOFER'S HAMMER	50
DISK ROLLER	10		
DOUBLE WELT IRON	28	<b>S</b>	
		SCREEN HEAD	38
<b>E</b>		SCRIBER / SCRATCH/MARKING TOOL	27
EAVES CLOSING JAWS 106 TSCA	18	SEAMING TONGS	16
EAVES EDGER 105 TK	18	SEAM OPENING PLIERS	15
EAVES RULER 120 TRL	18	SEMICIRCULAR DORMER SQUARESEAM FOLDER	18
EDGE ROLLER	10	SHAPE AND STRAIGHT CUTTING SNIPS	24-26
ERGO-CUT NATURAL SLATE CUTTER	47	SHEETBENDING-JAW	19
EXPANDER FOR PIPES	42	SINGLE-HANDED-EDGER 108 HK	21
		SLATER'S ANVIL	46
<b>F</b>		SLATER'S HAMMER	46
FILZ-FOLDER	27	SLATE GUILLOTINE - HEAVY	48
FLAT NOSE PLIERS	15	SLATE RIPPER	48, 49
FLAT SCARPER	27, 28	SMALL CLINCHING PLIERS	13, 14
FLUX FOR TIN - SOLDER	39	SOLDERING FLUID BRUSH	39
FREUND DISK ROLLER	10	SOLDERING IRON SET IN A METAL BOX	33
FREUND DISK ROLLER DOUBLE	10	SOLDERING IRON TIP	35, 36
FREUND EXPANDER	42	SOLDERING IRON TIP TURBO	35
FREUND MAXI EDGE ROLLER	11	SOLDERING IRON WITH CERCO - BURNER	33, 34
FREUND MAXI EDGE ROLLER DOUBLE	11	SPARE ORIFICE	38
FREUND PREMIUM EDGE ROLLER	11, 12	SPECIAL REPLACEMENT HANDLE FOR SLATE RIPPER	49
FREUND PREMIUM EDGE ROLLER WITH HAND GRIP	12	SPINDLE WHEEL	39
FREUND RADIUS ROLLER	10	SQUARE SEAM FOLDER	17
FREUND STANDARD EDGE ROLLER	10	SQUEEZING FOLDING PLIER	28
FREUND STANDARD EDGE ROLLER DOUBLE	11	STAND	38
FREUND TOGGLE JOINT HAND RIVETER	43	STANDARD EDGE ROLLER	10
		STANDARD SOLDERING KIT	33
<b>G</b>		STRAIGHT CUTTING SNIPS	24
GAS LIGHTER	39		
GENUINE AVIATION SNIP	24, 25	<b>T</b>	
GROOVING HAMMER, DIFFERENT FACES	29	TILE EDGER	19
GUIDE FOR SLATE GUILLOTINE	48	TIN EDGE JAW 104 BKZ	20
GUTTER HANGER BENDER	42	TINMAN'S HAMMER	31
		TINMAN'S HAMMER, PVC	30
<b>H</b>		TINMAN'S/Pelikan SNIPS	22
HAMMER FOR ANGLE FLAT SCRAPER	28	TOGGLE JOINT HAND RIVETER	43
HAND CUTTING SYSTEM HSG	20	TWIN SQUARE SEAM FOLDER, UPRIGHT 131 WDFST	17
HAND GRIP FOR FREUND EDGE ROLLER	12	T - SCREW	38
HAND NOTCHER 35	27	TWIN SEAM FOLDER 112 DPF	21
HIGH PERFORMANCE PROPANE SOLDERING IRON	34	TWIN SQUARE SEAM FOLDER 117 WDF	17
HIGH PERFORMANCE SPARE GAS CARTRIDGE POWER GAS	35		
HIGH-PRESSURE HOSE	37	<b>U</b>	
HIGH-PRESSURE REGULATOR	37	UNIVERSAL SLATER'S HAMMER	46
HOSE COUPLING	37	UNIVERSAL TIN SNIPS, LONGSTYLE PROFESSIONAL	26
HOT AIR GUN	34		
		<b>W</b>	
<b>L</b>		WIND PROTECTION	38
LOCKSMITH'S HAMMER	29	WOODEN HAMMER	31
<b>M</b>		<b>Z</b>	
MAXI EDGE ROLLER	11	ZINN LUX-LONGLIFE SOLDERING TIP	36, 37





**FREUND  
ADMINISTRATION AND PRODUCTION**



**P.F. FREUND & CIE. GmbH**  
**Hahnerberger Strasse 94-96**  
**D-42349 Wuppertal**  
**Phone +49 (0)2 02/4 09 29-0**  
**Fax +49 (0)2 02/4 09 29-29**  
**mail@freund-cie.com**  
**www.freund-cie.com**

 **FREUND**<sup>®</sup>  
...your tool



AMERICAN MASTER GUTTERS, INC.  
4333 W. 71st Street  
INDIANAPOLIS  
IN 46268  
P: 317.328.5293  
Fax: 317.328.5609  
americanmastergutters@gmail.com  
www.americanmastergutters.com  
www.freund-tools.com

  
*American Master Gutters, Inc.*